

**CREB3L2 Antibody (C-term)**  
**Affinity Purified Rabbit Polyclonal Antibody (Pab)**  
**Catalog # AP9654b**

**Specification**

---

**CREB3L2 Antibody (C-term) - Product Information**

Application	WB,E
Primary Accession	<a href="#">Q70SY1</a>
Reactivity	Human, Mouse
Host	Rabbit
Clonality	Polyclonal
Isotype	Rabbit IgG
Antigen Region	490-517

**CREB3L2 Antibody (C-term) - Additional Information**

**Gene ID** 64764

**Other Names**

Cyclic AMP-responsive element-binding protein 3-like protein 2, cAMP-responsive element-binding protein 3-like protein 2, BBF2 human homolog on chromosome 7, Processed cyclic AMP-responsive element-binding protein 3-like protein 2, CREB3L2, BBF2H7

**Target/Specificity**

This CREB3L2 antibody is generated from rabbits immunized with a KLH conjugated synthetic peptide between 490-517 amino acids from the C-terminal region of human CREB3L2.

**Dilution**

WB~~1:2000

E~~Use at an assay dependent concentration.

**Format**

Purified polyclonal antibody supplied in PBS with 0.09% (W/V) sodium azide. This antibody is purified through a protein A column, followed by peptide affinity purification.

**Storage**

Maintain refrigerated at 2-8°C for up to 2 weeks. For long term storage store at -20°C in small aliquots to prevent freeze-thaw cycles.

**Precautions**

CREB3L2 Antibody (C-term) is for research use only and not for use in diagnostic or therapeutic procedures.

**CREB3L2 Antibody (C-term) - Protein Information**

**Name** CREB3L2

**Synonyms** BBF2H7

**Function** Transcription factor involved in unfolded protein response (UPR). In the absence of endoplasmic reticulum (ER) stress, inserted into ER membranes, with N-terminal DNA-binding and transcription activation domains oriented toward the cytosolic face of the membrane. In response to ER stress, transported to the Golgi, where it is cleaved in a site-specific manner by resident proteases S1P/MBTPS1 and S2P/MBTPS2. The released N-terminal cytosolic domain is translocated to the nucleus to effect transcription of specific target genes. Plays a critical role in chondrogenesis by activating the transcription of SEC23A, which promotes the transport and secretion of cartilage matrix proteins, and possibly that of ER biogenesis-related genes (By similarity). In a neuroblastoma cell line, protects cells from ER stress-induced death (PubMed:[17178827](#)). In vitro activates transcription of target genes via direct binding to the CRE site (PubMed:[17178827](#)).

#### **Cellular Location**

Endoplasmic reticulum membrane {ECO:0000250|UniProtKB:Q8BH52}; Single-pass type II membrane protein Note=ER membrane resident protein. Upon ER stress, translocated to the Golgi apparatus where it is cleaved. The cytosolic N-terminal fragment (processed cyclic AMP-responsive element-binding protein 3-like protein 1) is transported into the nucleus. {ECO:0000250|UniProtKB:Q8BH52}

#### **Tissue Location**

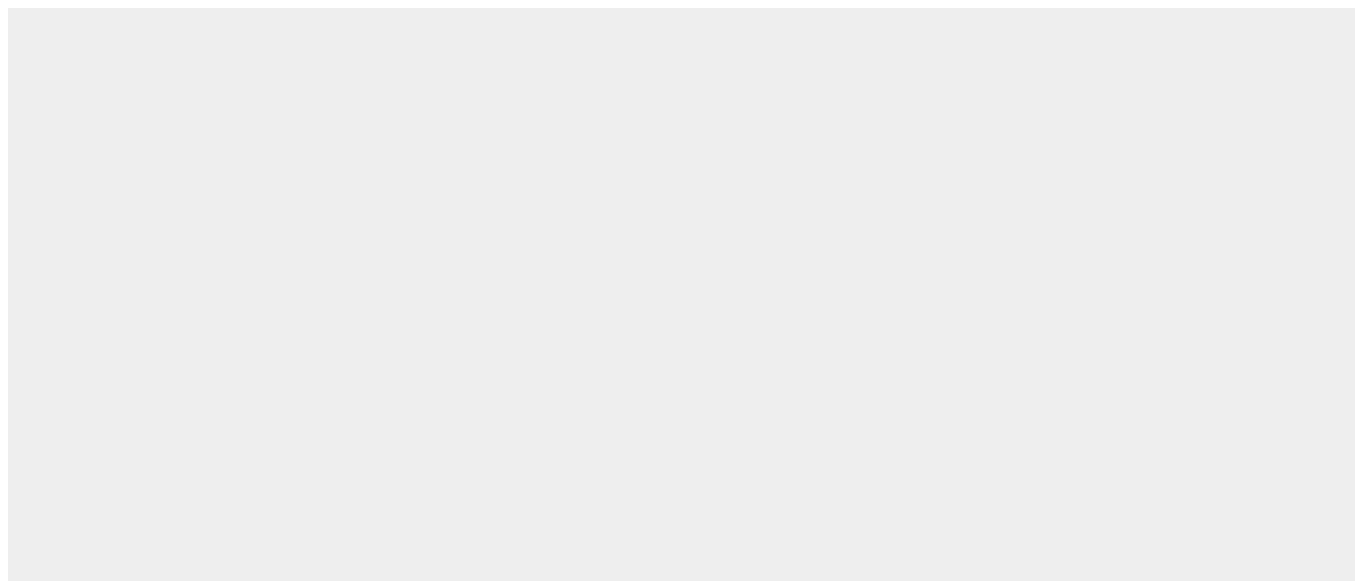
Widely expressed with highest levels in placenta, lung, spleen and intestine, and lowest levels in heart, brain, skeletal muscle, thymus, colon and leukocytes. In fetal tissues, the weakest expression is detected in brain and heart

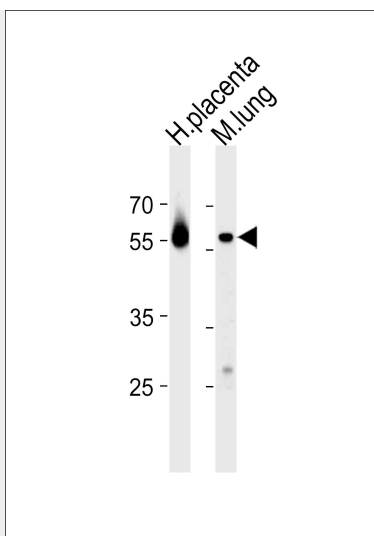
### **CREB3L2 Antibody (C-term) - Protocols**

Provided below are standard protocols that you may find useful for product applications.

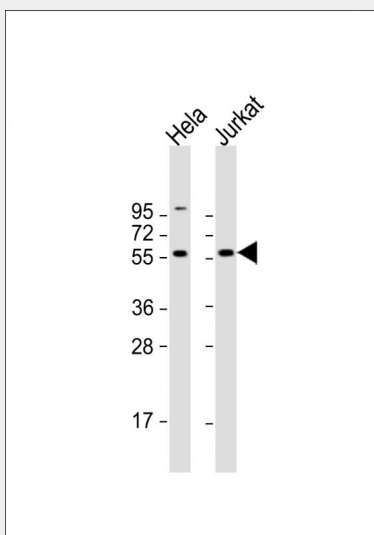
- [Western Blot](#)
- [Blocking Peptides](#)
- [Dot Blot](#)
- [Immunohistochemistry](#)
- [Immunofluorescence](#)
- [Immunoprecipitation](#)
- [Flow Cytometry](#)
- [Cell Culture](#)

### **CREB3L2 Antibody (C-term) - Images**





CREB3L2 Antibody (C-term) (Cat. #AP9654b) western blot analysis in human placenta and mouse lung tissue lysates (35ug/lane). This demonstrates the CREB3L2 antibody detected the CREB3L2 protein (arrow).



All lanes : Anti-CREB3L2 Antibody (C-term) at 1:2000 dilution Lane 1: HeLa whole cell lysate Lane 2: Jurkat whole cell lysate Lysates/proteins at 20 µg per lane. Secondary Goat Anti-Rabbit IgG, (H+L), Peroxidase conjugated at 1/10000 dilution. Predicted band size : 57 kDa Blocking/Dilution buffer: 5% NFDM/TBST.

### CREB3L2 Antibody (C-term) - Background

CREB3L2 is a member of the old astrocyte specifically induced substance (OASIS) DNA binding and basic leucine zipper dimerization (bZIP) family of transcription factors, which includes CREB3 (MIM 606443) and CREB4 (MIM 607138).

### CREB3L2 Antibody (C-term) - References

Panagopoulos, I., et al. Oncol. Rep. 21(3):615-624(2009)  
Lui, W.O., et al. Cancer Res. 68(17):7156-7164(2008)

### CREB3L2 Antibody (C-term) - Citations

- [A systemic cell stress signal confers neuronal resilience toward oxidative stress in a Hedgehog-dependent manner](#)

